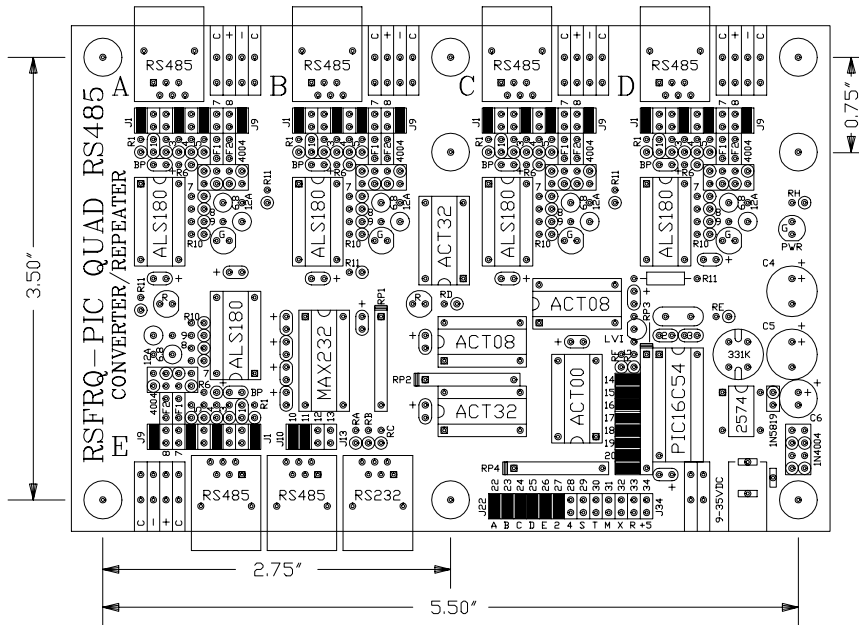


BOARD SIZE 6.0" X 4.0"

NOTE: REMOVE POWER TO CHANGE BAUD/BIT JUMPERS



BAUD	J14	J15	J16	J17
300	REMOVE	REMOVE	REMOVE	REMOVE
600	REMOVE	REMOVE	REMOVE	INSTALL
1200	REMOVE	REMOVE	INSTALL	REMOVE
2400	REMOVE	REMOVE	INSTALL	INSTALL
4800	REMOVE	INSTALL	REMOVE	REMOVE
9600	REMOVE	INSTALL	INSTALL	INSTALL
19200	REMOVE	INSTALL	INSTALL	REMOVE
38400	REMOVE	INSTALL	INSTALL	INSTALL
57600	INSTALL	REMOVE	REMOVE	REMOVE
76800	INSTALL	REMOVE	REMOVE	INSTALL
115200	INSTALL	REMOVE	INSTALL	REMOVE
RESVD	INSTALL	REMOVE	INSTALL	INSTALL
RESVD	INSTALL	INSTALL	REMOVE	REMOVE
RESVD	INSTALL	INSTALL	REMOVE	INSTALL
RESVD	INSTALL	INSTALL	INSTALL	REMOVE
9600*	INSTALL	INSTALL	INSTALL	INSTALL

* FACTORY SETTING FOR 9600, N, 8, 1 WITH JUMPERS J10 THRU J13 IGNORED (XXXX) FOR ALL OTHER BAUD RATES REMOVE JUMPERS AS REQUIRED.

TOTAL BITS	START	PARITY	DATA	STOP	EXAMPLE
6	REMOVE	REMOVE	REMOVE	REMOVE	
6-1/2	REMOVE	REMOVE	REMOVE	INSTALL	
7	REMOVE	REMOVE	INSTALL	REMOVE	
7-1/2	REMOVE	REMOVE	INSTALL	INSTALL	
8	REMOVE	INSTALL	REMOVE	REMOVE	
8-1/2	REMOVE	INSTALL	REMOVE	INSTALL	
9	REMOVE	INSTALL	INSTALL	REMOVE	N, 7, 1
9-1/2	REMOVE	INSTALL	INSTALL	INSTALL	
10	INSTALL	REMOVE	REMOVE	REMOVE	N, 8, 1 (P, 7, 1)
10-1/2	INSTALL	REMOVE	REMOVE	INSTALL	
11	INSTALL	REMOVE	INSTALL	REMOVE	N, 8, 2 (P, 8, 1)
11-1/2	INSTALL	REMOVE	INSTALL	INSTALL	
12	INSTALL	INSTALL	REMOVE	INSTALL	
12-1/2	INSTALL	INSTALL	REMOVE	INSTALL	
13	INSTALL	INSTALL	INSTALL	REMOVE	
13-1/2	INSTALL	INSTALL	INSTALL	INSTALL	

NOTES: AT 115.2K BAUD THE START BIT ERROR IS UNDER 200NS (2.5%), THE END OF CHARACTER UNCERTAINTY IS APPROXIMATELY 2.0USEC.

JUMPER SUMMARY: CELL, CONTROL, RS232

CELL JUMPERS (A,B,C,D,E)	
JUMPER FUNCTION	INSTALL
ENABLE TERM.	J1
DC TERMINATION	J2
910 BIAS PULL-UP	J3
2.2K BIAS PULL-UP	J4
910 BIAS PULL-DN	J5
2.2K BIAS PULL-DN	J6
+485 FUSE BYPASS	J7
-485 FUSE BYPASS	J8
RJ11 PINS 1&6-CDM	J9

CONTROL JUMPERS	
JUMPER FUNCTION	INSTALL
ENABLE CELL A RX	J22
ENABLE CELL B RX	J23
ENABLE CELL C RX	J24
ENABLE CELL D RX	J25
MASTER RX ENABLE	J26
RS232 CONV. MODE	J27
RS485 REP. MODE	J28
JUMPERS J29 THRU J34	DO NOT USE I

RS232 MODE JUMPERS	
JUMPER FUNCTION	INSTALL
COMPUTER MODE	J10
COMPUTER MODE	J11
MODEM MODE	J12
MODEM MODE	J13
NOTE: REVERSES TX & RX LINES	

■ JUMPER INSTALLED (FACTORY SETTING)

This drawing is the property of R. E. SMITH and shall not be used except with the written permission of R. E. SMITH; no copies shall be made of it and all proprietary rights in the matter contained in this drawing are the property of R. E. SMITH.
COPYRIGHT - R. E. SMITH, 1994

DRAWN BY RES	SUBJECT QUAD REPEATER
DATE 11-30-95	FDR COMM. CONVERSION
SCALE NONE	RES R. E. SMITH DWG NO. 480 TULSAVILLE RD. WASHINGTON, OHIO 45681
CHKD BY RES	RSFRQBR REV. A

SHEET 1 OF 1

RSFRQBR