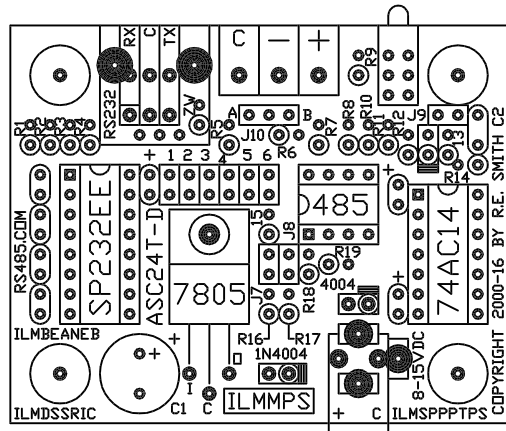


MODEL ASC24T

REV D



MODEL ASC24T CONVERTER
2-WIRE HALF-DUPLEX RS485
QUICK DATA & INFORMATION

BIDIRECTIONAL RS232 to RS485 RS485 to RS232	DATA RATE UP to 115,2Kbps AUTO TX ENABLE
TEMP/HUMIDITY -40C to 85C 10-90%RH NON-CD	VOLTAGE & PWR Vin = 8-15VDC 0.5 WATTS TYP.
PROTECTION 22 OHM SERIES RESISTANCE	ASYNCHRONOUS DATA ANY SPEED & BIT FORMAT
LED INDICATORS, BIAS&TERMINATION JUMPERS, FAST TURN-AROUND TIME AVOIDS DATA-COLLISIONS & DELAYS	
TALK TO RON THE DESIGN ENGINEER 513-638-0228 CELL, NO TEXTING PLEASE, EXCEPT FOR PHONE NUMBER EMAIL ADDRESS AND YOUR NAME.	

RESmith
WWW.RS485.COM
10330 CHESTER ROAD, CINCINNATI, OHIO 45215
513-874-4796

This drawing is the property of R. E. SMITH and shall not be used except with the written permission of R. E. SMITH, no copies shall be made of it and all proprietary rights in the matter contained in this drawing are the property of R. E. SMITH. COPYRIGHT - R. E. SMITH, 2001-2012	DRAWN BY RES	SUBJECT RS232/RS485
	DATE 7-16-16	FOR AUTOMATIC CONV.
SHEET 1 OF 1	ASC24TDD	CHKD. BY RES
RES R. E. SMITH 10330 CHESTER ROAD CINCINNATI, OHIO 45215		DWG. NO. ASC24TDD REV. D