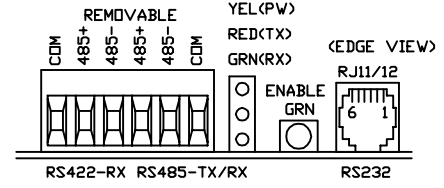
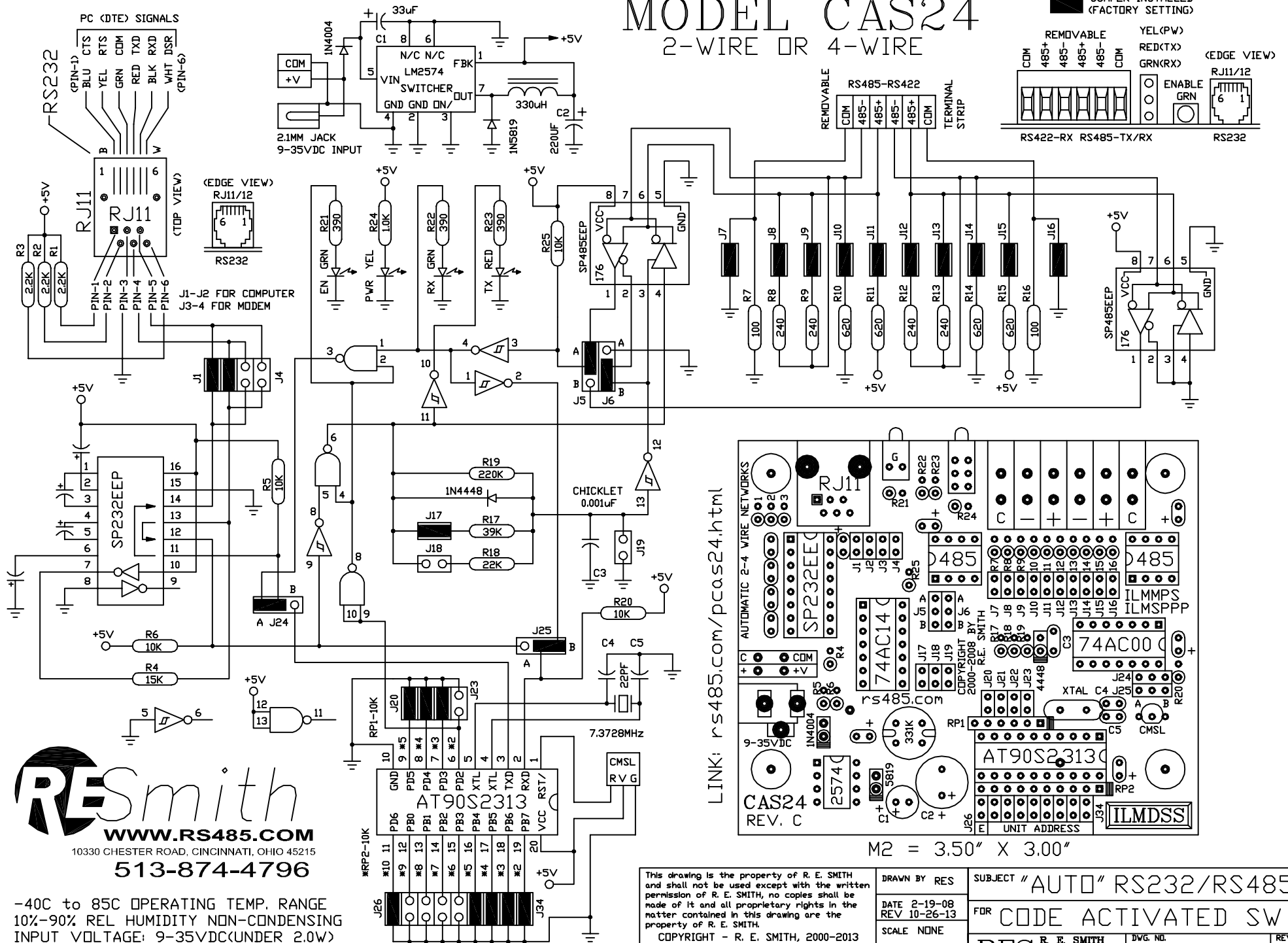


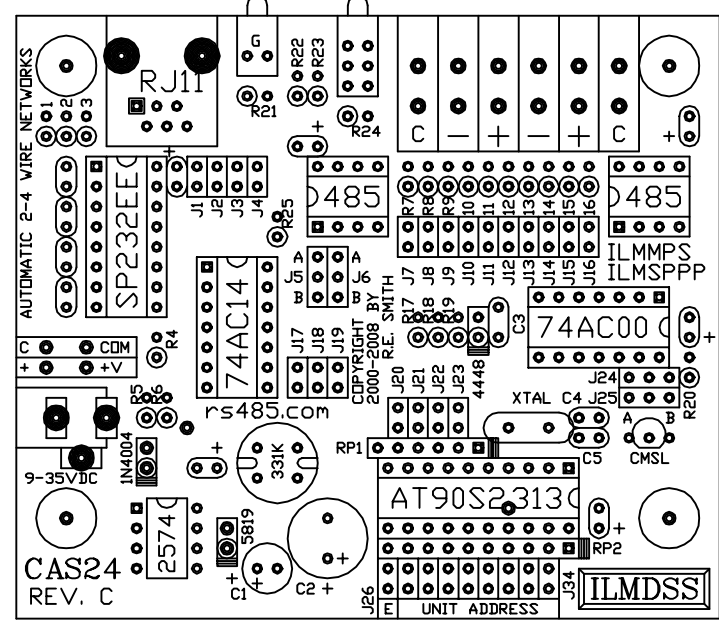
MODEL CAS24

2-WIRE OR 4-WIRE

■ JUMPER INSTALLED
(FACTORY SETTING)



LINK: rs485.com/pcas24.html



RESsmith
WWW.RS485.COM
 10330 CHESTER ROAD, CINCINNATI, OHIO 45215
513-874-4796

-40C to 85C OPERATING TEMP. RANGE
 10%-90% REL HUMIDITY NON-CONDENSING
 INPUT VOLTAGE: 9-35VDC(UNDER 2.0W)

This drawing is the property of R. E. SMITH and shall not be used except with the written permission of R. E. SMITH, no copies shall be made of it and all proprietary rights in the matter contained in this drawing are the property of R. E. SMITH. COPYRIGHT - R. E. SMITH, 2000-2013		DRAWN BY RES	SUBJECT "AUTO" RS232/RS485	
SHEET 1 OF 1		DATE 2-19-08 REV 10-26-13	FOR CODE ACTIVATED SW	
CAS24		SCALE NONE	RES R. E. SMITH 10330 CHESTER ROAD CINCINNATI, OH 45215	
CHKD. BY RES		DWG. NO. CAS24		REV. C