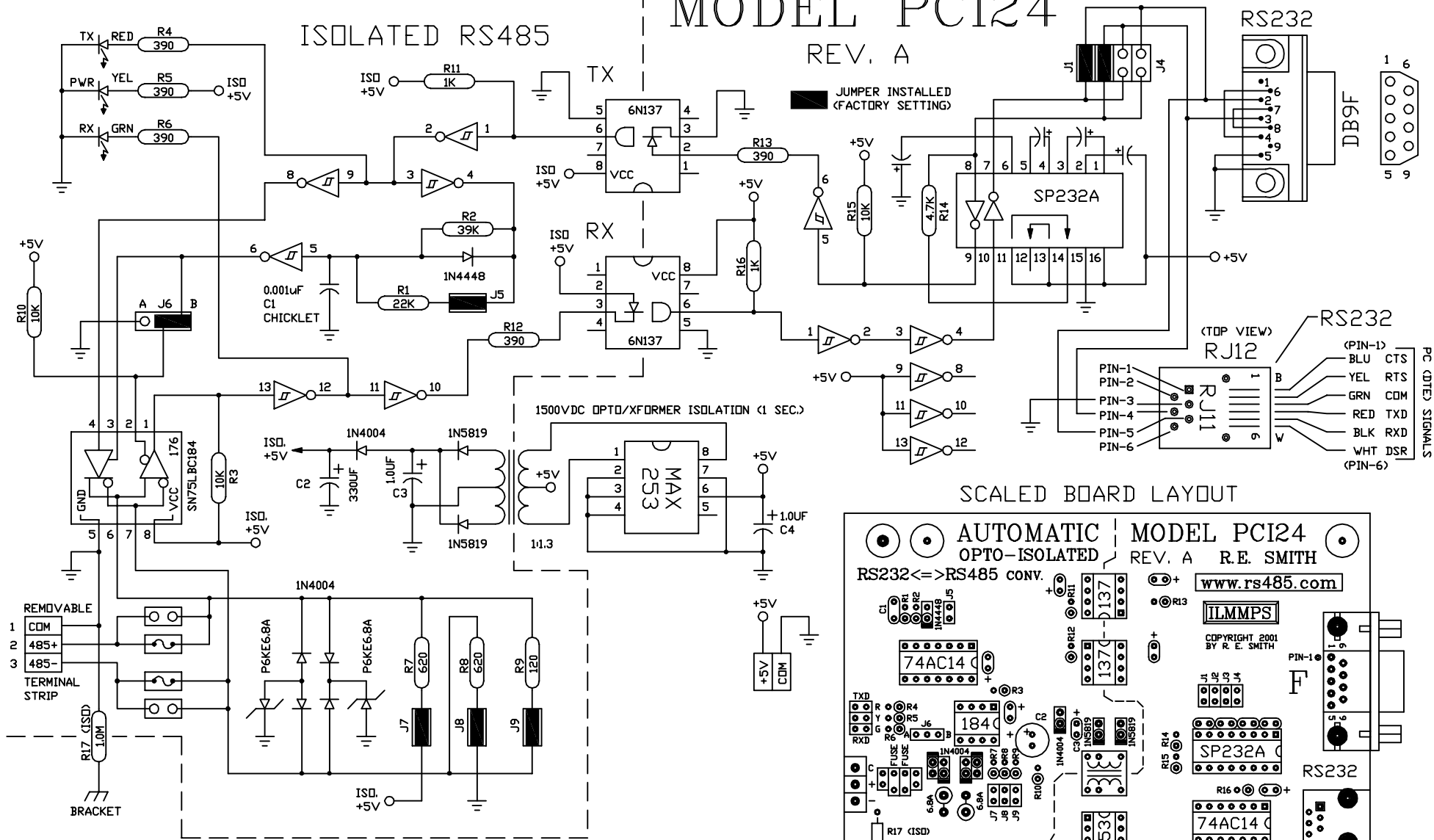
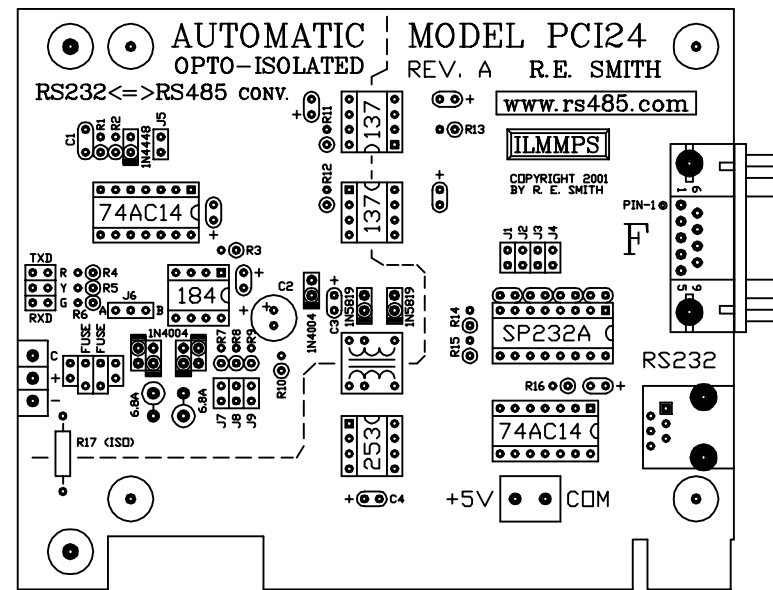


# MODEL PCI24

REV. A



SCALED BOARD LAYOUT



OBSOLETE UNIT, PLEASE CALL FOR RESERECTION!

**RES**Smith  
 WWW.RS485.COM  
 10330 CHESTER ROAD, CINCINNATI, OHIO 45215  
 513-874-4796

PCI POWERED  
 INDEPENDENT  
 CONVERTER

This drawing is the property of R. E. SMITH and shall not be used except with the written permission of R. E. SMITH, no copies shall be made of it and all proprietary rights in the matter contained in this drawing are the property of R. E. SMITH. COPYRIGHT - R. E. SMITH, 2001-2014		DRAWN BY RES	SUBJECT RS232/RS485	
DATE 4-23-01 REV 11-5-13		FOR 1500VDC ISOLATED		
SCALE NONE		RES R. E. SMITH 10330 CHESTER ROAD CINCINNATI, OH 45215		DWG. NO. PCI24
SHEET 1 OF 1	PCI24	CHKD. BY RES	REV. A	