

RS232

RS485

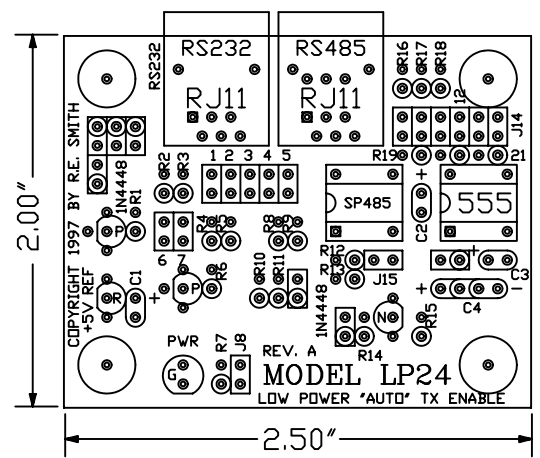
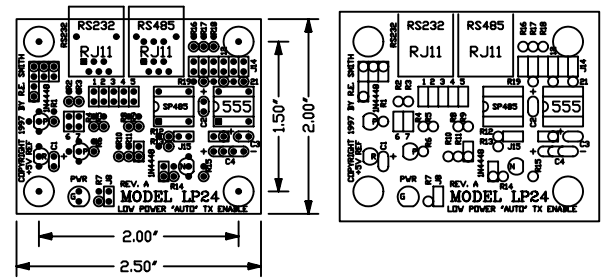
AUTOMATIC BAUD RATE

FACTORY DEFAULT SETTING IS FOR FULL AUTOMATIC MODE OF OPERATION. AT BAUD RATES ABOVE 9600 SOME RESPONSE DELAY MAY BE NECESSARY (100µSEC MAX. AT 115.2K). ANY NUMBER OF DATA BITS, PARITY, AND STOP BITS CAN BE ACCOMMODATED. FOR NO DELAYS IN OPERATION USE THE VALUES FOR R21 SHOWN IN TABLE AT LEFT. CALL AND ASK FOR RON IF ADDITIONAL ASSISTANCE IS NEEDED.

NOTE:
A MINIMUM OF ONE SIGNAL INPUT MUST BE IN THE HIGH STATE (+7V) TO INSURE PROPER OPERATION. IN SOME INSTANCES MORE THEN ONE SIGNAL INPUT COULD BE REQUIRED FOR PROPER OPERATION. THE UNIT WILL NOT WORK IF TERMINATION IS USED ON THE RS-485 SIDE OF THE INTERFACE.

OTHER NOTES: OUR STANDARD CABLE WILL CONNECT TO RTS ON A PC. IF MORE THAN ONE OUTPUT IS REQUIRED TO POWER THE UNIT PLEASE CALL FOR ASSISTANCE. THANKS, RON SMITH 513-874-4796

(1:1 ACTUAL SIZE)



R. E. SMITH
4311 TYLERSVILLE ROAD
HAMILTON, OHIO 45011
513-874-4796
513-874-1236 Fax.

MODEL
LP24

This drawing is the property of R. E. SMITH and shall not be used except with the written permission of R. E. SMITH, no copies shall be made of it and all proprietary rights in the matter contained in this drawing are the property of R. E. SMITH. COPYRIGHT - R. E. SMITH, 1997		DRAWN BY RES	SUBJECT RS232 TO RS485
		DATE 4-26-97	FOR LOW POWER/AUTO.
		SCALE NONE	
SHEET 1 OF 1		CHKD. BY RES	RES R. E. SMITH 4311 TYLERSVILLE RD. HAMILTON, OHIO 45011
LP24			DWG. NO. LP24
			REV. A