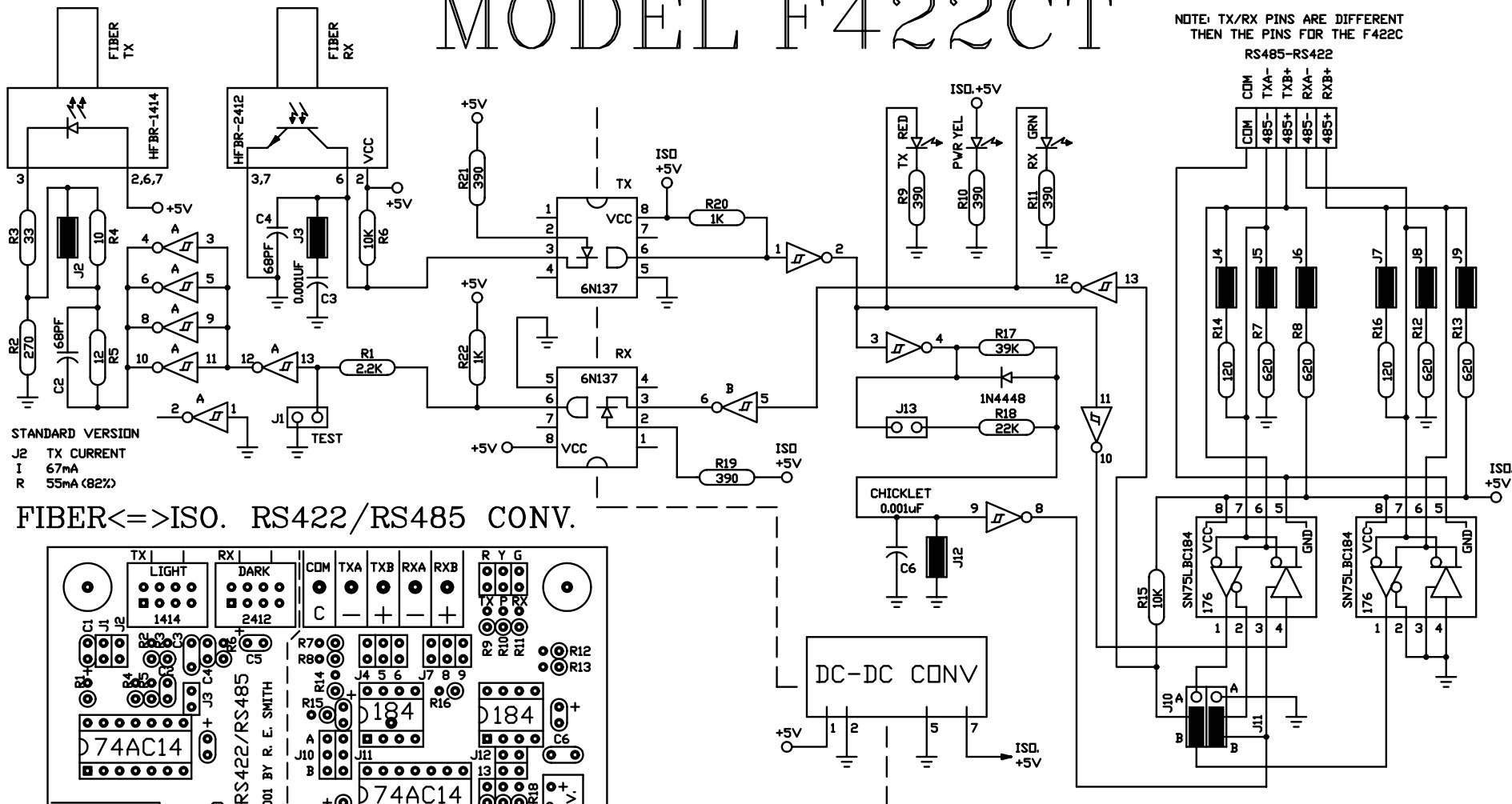


MODEL F422CT

NOTE: TX/RX PINS ARE DIFFERENT THEN THE PINS FOR THE F422C

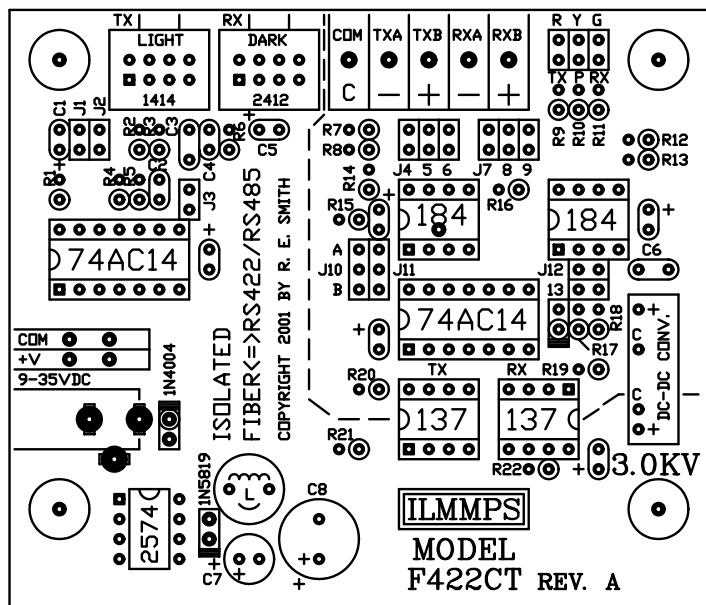
RS485-RS422



STANDARD VERSION

- J2 TX CURRENT
- I 57mA
- R 55mA (82%)

FIBER<=>ISO. RS422/RS485 CONV.

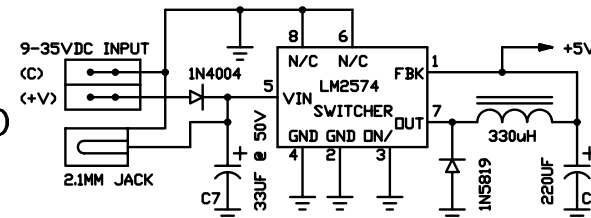


MODEL F422CT REV. A

JUMPER INSTALLED (FACTORY SETTING)

(3.0KV OPTO/XFORMER ISOLATION)

R. E. SMITH
 4311 TYLERSVILLE ROAD
 HAMILTON, OHIO 45011
 513-874-4796



J10	J11	J12	NOTE
B	B	I	RS422(4-WIRE) #
A	B	R	RS485(2-WIRE)
A	A	R	RS485(LOOP-BACK)
B	B	R	RS422(QUILDRIP)
A=INSTALL, B=INSTALL, I=INSTALL, R=REMOVE, #=FACTORY DEFAULT SETTING			

www.rs485.com

This drawing is the property of R. E. SMITH and shall not be used except with the written permission of R. E. SMITH, no copies shall be made of it and all proprietary rights in the matter contained in this drawing are the property of R. E. SMITH. COPYRIGHT - R. E. SMITH, 2000		DRAWN BY RES	SUBJECT FIBER<=>ISO. RS422	
SHEET 1 OF 1		DATE 12-3-01	FOR AUTO CONVERSION	
F422CT		SCALE NONE	RES R. E. SMITH 4311 TYLERSVILLE RD. HAMILTON, OHIO 45011	
CHKD. BY RES		DWG. NO. F422CT		REV. A