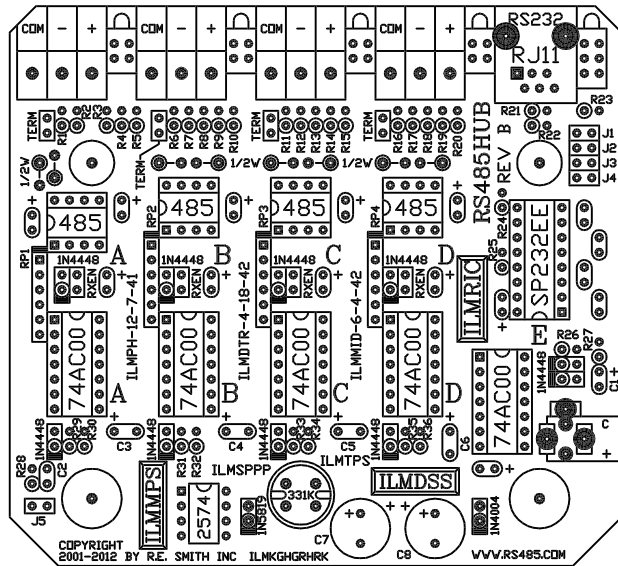


PCB SIZE: 4.10" X 3.75"



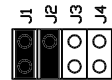
# MODEL RS485HUB REV B

## QUICK DATA & INFORMATION

THE RS485HUB IS A 4-PORT RS485 REPEATER/HUB WITH AN RS232 PORT. THE UNIT CAN BE USED TO EXPAND RS485 2-WIRE SERIAL NETWORKS BY INCREASING THE DISTANCE and/or NODES ON A NETWORK. TERMINATION JUMPER AND FIXED BIAS, AUTO TX ENABLE, WITH FAST RETURN TO RX OPERATION, WITHOUT DATA-COLLISIONS. THIS ELIMINATES TURN-AROUND DELAYS, AND SOFTWARE CHANGES ARE NOT REQUIRED. 11 LED INDICATORS, BUILT-IN OVER CURRENT & ESD PROTECTION. CASCADE FOR VERY LARGE NETWORKS.

"TRUE REPEATER" WITH "HOME-RUN" OR "DAISY-CHAIN" ON EACH RS485 PORT. UNIT IS NON-ISOLATED AND PROVIDES SUPERIOR OPERATION IN MANY APPLICATIONS AND IS ONE OF OUR MOST COST EFFECTIVE AND POPULAR UNITS. AN OPTIONAL ENCLOSURE, RS232 CABLE, AND A 12VDC-SPS POWER SUPPLY IS ALSO AVAILABLE.

-40C TO 85C, 10%-90% RH (NON-CONDENSING) OPERATION.  
115.2Kbps @ 4000ft., 9-35Vdc INPUT Voltage, 0.8W TYP



RS232 DTE/DCE (REVERSE TXD & RXD)  
INSTALL J1-J2 FOR PC (DB9F-7)  
INSTALL J3-4 FOR MODEM (DB9M-7)

JUMPER INSTALLED  
(FACTORY SETTING)  
I=INSTALL, R=REMOVE



J9=I FOR 38.4Kbps or ABOVE IF NECESSARY

BIAS & TERMINATION SHOULD BE APPLIED AT RS485 END POINTS



FIXED 620-OHM BIAS RESISTORS EACH RS485 PORT  
TERM=I FOR 120-OHM RS485 TERMINATION



REXN=I ENABLE RX ON EACH RS485 PORT  
RXEN=R DISABLE RX FOR TROUBLE SHOOTING

4X RS485 REPEATER HUB  
WITH RS232 PORT FOR  
HALF-DUPLEX NETWORKS.  
EASY TO CASCADE UNITS.

**RESmith**  
WWW.RS485.COM

10330 CHESTER ROAD, CINCINNATI, OHIO 45215

513-874-4796

LINK: [rs485.com/prs485hub.html/](http://rs485.com/prs485hub.html/)

BIDIRECTIONAL RS485 <=> RS485 RS485 <=> RS232	DATA RATE UP TO 115.2Kbps+ AUTO TX ENABLE
TEMP/HUMIDITY -40C TO 85C 10-90%RH NON-CD	VOLTAGE & PWR Vin = 9-35VDC 0.5 WATTS TYP.
PROTECTION 22 OHM SERIES RESISTANCE	ASYNCHRONOUS DATA ANY SPEED & BIT FORMAT
11-LED INDICATORS, TERMINATION JUMPERS, FAST TURN-AROUND TIME AVOIDS DATA-COLLISIONS & DELAYS	
TALK TO RON THE DESIGN ENGINEER 513-638-0228 CELL, NO TEXTING PLEASE, EXCEPT FOR PHONE NUMBER EMAIL ADDRESS AND YOUR NAME.	

This drawing is the property of R. E. SMITH and shall not be used except with the written permission of R. E. SMITH, no copies shall be made of it and all proprietary rights in the matter contained in this drawing are the property of R. E. SMITH. COPYRIGHT - R. E. SMITH, 2001-2020	DRAWN BY RES	SUBJECT AUTO 5X REPEATER	
	DATE 3-31-20 REV. 5-1-20	FOR DISTRIBUTION HUB	
SHEET 1 OF 1	RS485HUBQD	CHKD. BY RES	RES R. E. SMITH 10330 CHESTER ROAD CINCINNATI, OHIO 45215
			DWG. NO. RS485HUBQD REV. B