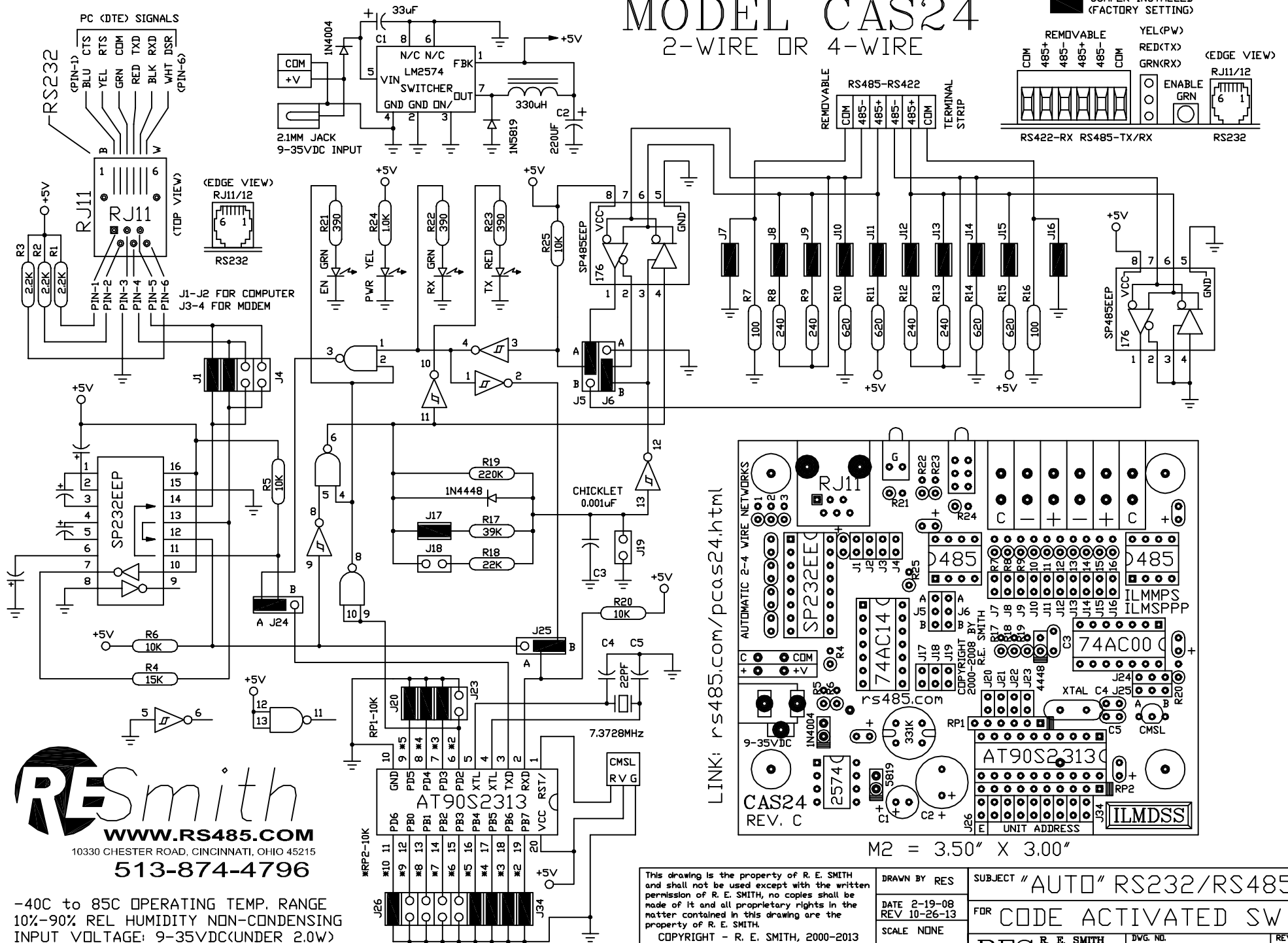


MODEL CAS24

2-WIRE OR 4-WIRE

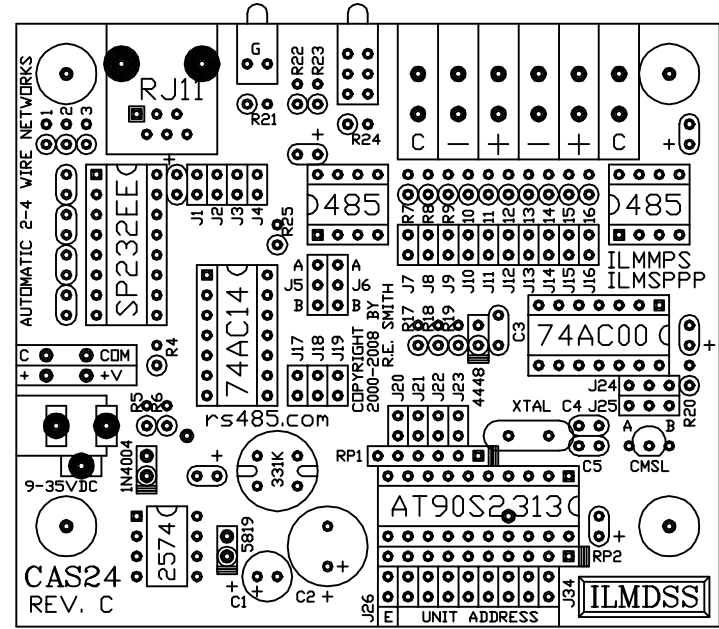
■ JUMPER INSTALLED
(FACTORY SETTING)



RESsmith
 WWW.RS485.COM
 10330 CHESTER ROAD, CINCINNATI, OHIO 45215
 513-874-4796

-40C to 85C OPERATING TEMP. RANGE
 10%-90% REL HUMIDITY NON-CONDENSING
 INPUT VOLTAGE: 9-35VDC(UNDER 2.0W)

LINK: rs485.com/pcas24.html



This drawing is the property of R. E. SMITH and shall not be used except with the written permission of R. E. SMITH, no copies shall be made of it and all proprietary rights in the matter contained in this drawing are the property of R. E. SMITH. COPYRIGHT - R. E. SMITH, 2000-2013		DRAWN BY RES	SUBJECT "AUTO" RS232/RS485
SHEET 1 OF 1		DATE 2-19-08 REV 10-26-13	FOR CODE ACTIVATED SW
CAS24		SCALE NONE	RES R. E. SMITH 10330 CHESTER ROAD CINCINNATI, OH 45215
CHKD. BY RES		DWG. NO. CAS24	
		REV. C	