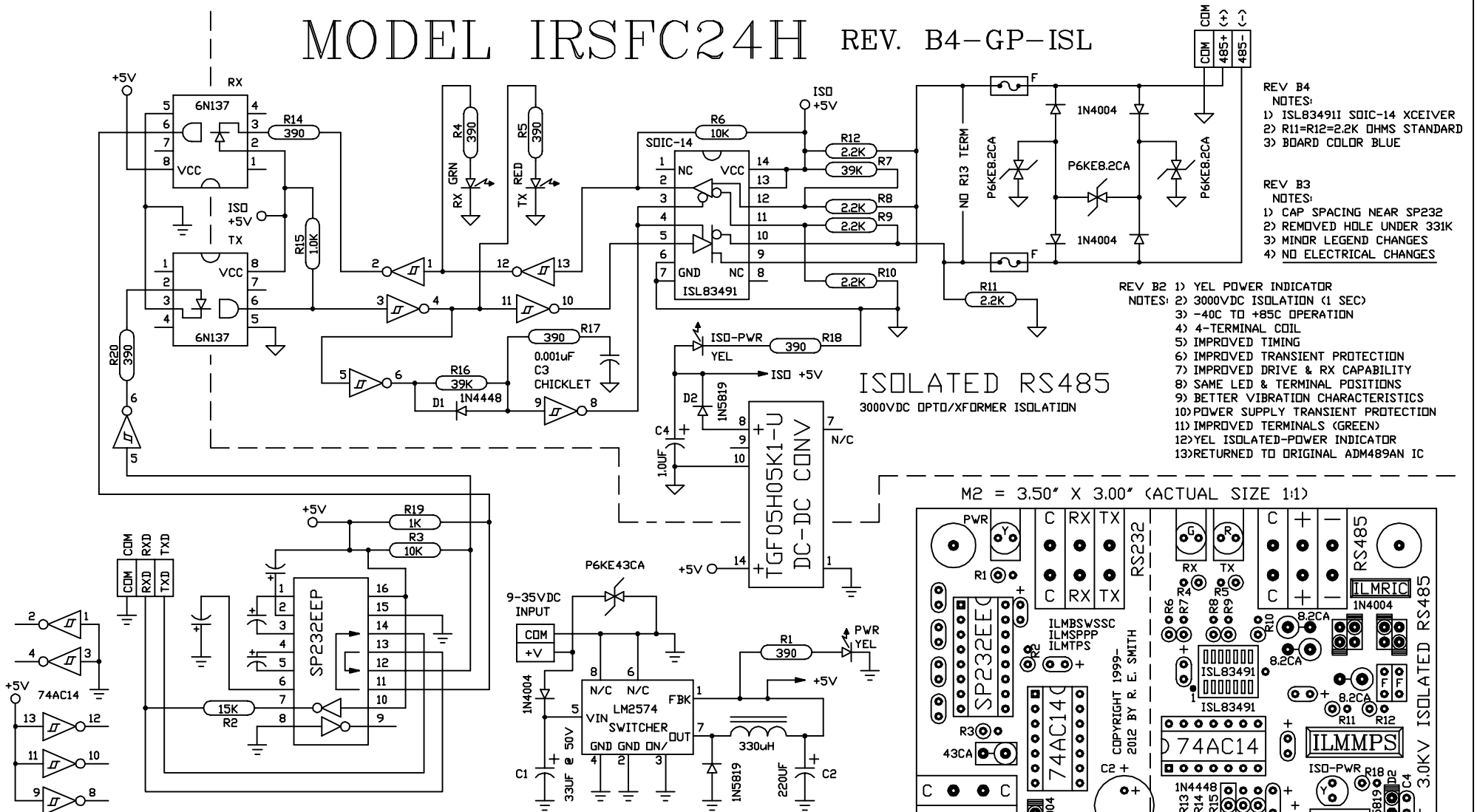


MODEL IRSFC24H REV. B4-GP-ISL



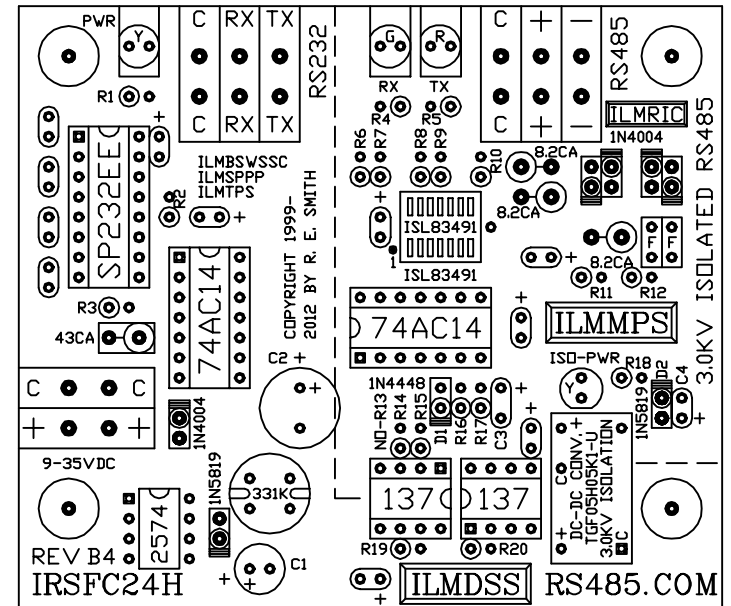
REV B4
NOTES:
1) ISL83491I SOIC-14 XCEIVER
2) R11=R12=2.2K OHMS STANDARD
3) BOARD COLOR BLUE

REV B3
NOTES:
1) CAP SPACING NEAR SP232
2) REMOVED HDLE UNDER 331K
3) MINOR LEGEND CHANGES
4) NO ELECTRICAL CHANGES

REV B2 1) YEL POWER INDICATOR
NOTES:
2) 3000VDC ISOLATION (1 SEC)
3) -40C TO +85C OPERATION
4) 4-TERMINAL COIL
5) IMPROVED TIMING
6) IMPROVED TRANSIENT PROTECTION
7) IMPROVED DRIVE & RX CAPABILITY
8) SAME LED & TERMINAL POSITIONS
9) BETTER VIBRATION CHARACTERISTICS
10) POWER SUPPLY TRANSIENT PROTECTION
11) IMPROVED TERMINALS (GREEN)
12) YEL ISOLATED-POWER INDICATOR
13) RETURNED TO ORIGINAL ADM489AN IC

ISOLATED RS485
3000VDC OPTO/XFORMER ISOLATION

M2 = 3.50" X 3.00" (ACTUAL SIZE 1:1)



ISL83491 XCEIVER SM IC FOR OPERATION TO 10,000+ FT. @ 38,400BPS USING 20AWG WIRE.
NOTE: 3 BOARDS WITH 2 OR 3 BOARDS POWERED.
LABELS: IRSFC24H-B4-GP-ISL (R11=R12=2.2K)
DATE CODE, SERIAL NUMBER
NOTE: COLOR: BLUE

RESSmith
WWW.RS485.COM

10330 CHESTER ROAD, CINCINNATI, OHIO 45215

513-874-4796

www.rs485.com

LINK: rs485.com/pirsfc24h.html

This drawing is the property of R. E. SMITH and shall not be used except with the written permission of R. E. SMITH, no copies shall be made of it and all proprietary rights in the matter contained in this drawing are the property of R. E. SMITH. COPYRIGHT - R. E. SMITH, 1999-2013		DRAWN BY RES	SUBJECT
SHEET 1 OF 1		DATE 10-31-12 REV 9-19-13	RS232/RS485
IRSFC24H-GP		SCALE NONE	FOR 3000VDC ISOLATED
CHKD. BY RES		RES	R. E. SMITH 10330 CHESTER ROAD CINCINNATI, OHIO 45215
			DWG. NO. IRSFC24H-GP REV. B4